

# Yowasa Yue Ni

Kimi Ga Nozomu Eien TV OST 1

ADO TORAI/KENICHI SUTO/YOSHIKI MINAMI

Transcribed by Sarah Pobjoy

Adagio (♩ = c. 84)

Measures 1-4 of the piece. The music is in 3/4 time, key of B-flat major. The right hand features a melodic line with a triplet of eighth notes in measure 4. The left hand provides a harmonic accompaniment with chords and single notes.

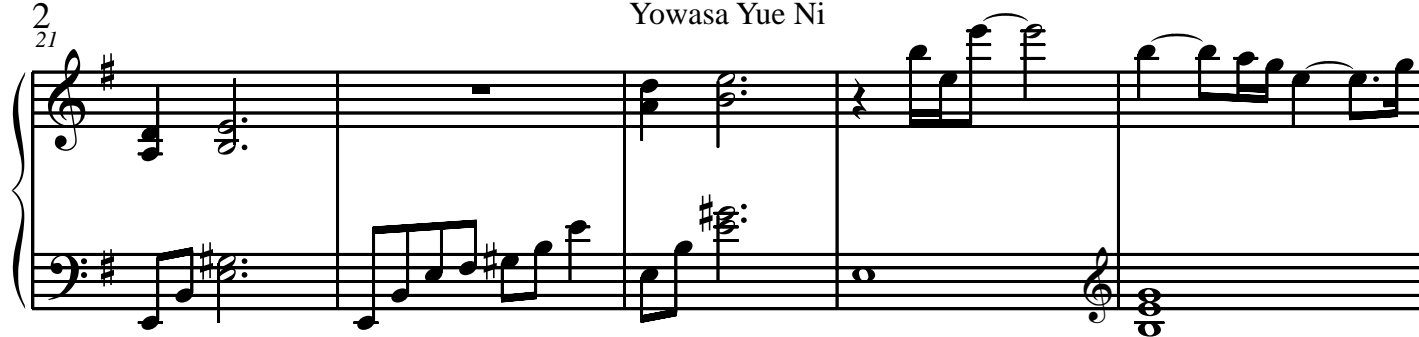
Measures 5-8 of the piece. The right hand continues the melodic development with a key signature change to C major in measure 8. The left hand features a more active bass line with eighth notes.

Measures 9-15 of the piece. The right hand has a more active melodic line with eighth notes. The left hand continues with a steady accompaniment of eighth notes.

Measures 16-19 of the piece. The right hand features a triplet of eighth notes in measure 17. The left hand has a more active bass line with eighth notes.

2  
21

## Yowasa Yue Ni



26

